

Shotshells testing software XB_SSW© 2.0

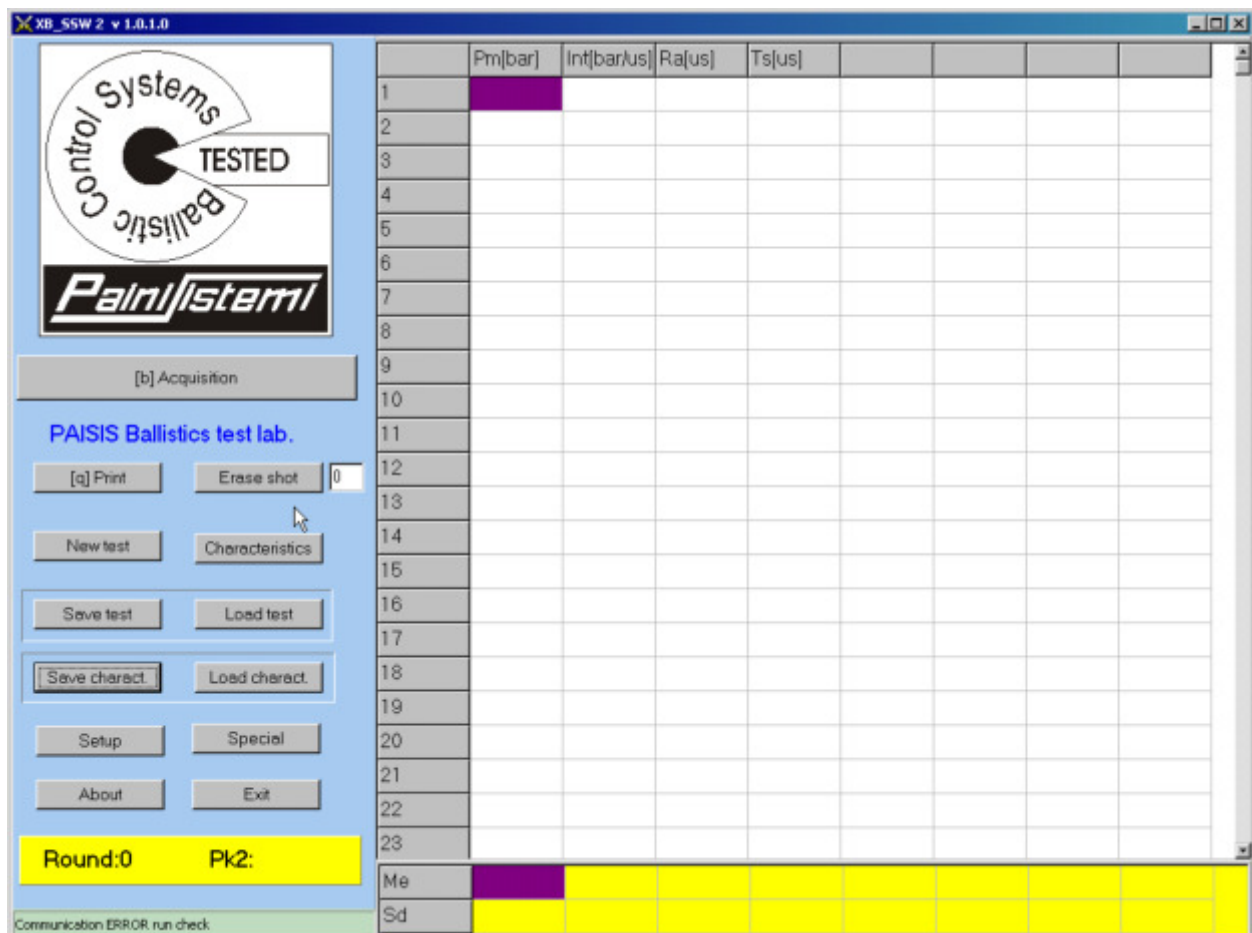
Acquisition

Analysis

Management



A really user's friendly but powerful software developed for shotshells ballistic tests.



The software XB_SSW (XBAL Shot Shells Windows) was developed as update the old DOS version XBAL 2.9xx to make an very affordable and more easy to learn and use industrial software for ballistic quality control. The new 2.0 release add some new feature derived from XBAL X software to increase usability of the software that remain fully compliant with the C.I.P. requirement and can be used by people not skilled in computer science.

XB_SSW is very fast and easy to use because all the data are displayed in the main window automatically shot after shot; all the data are available immediately, statistics is available on finger tip and extensive error message help the operator. The software is available in the Standard and Lite (without pressure curve display) version..

The key features of XB_SSW2 are:

- ✓ Maximum number of shot: 100;
- ✓ Maximum numbers of variables displayed on single shot:8;
- ✓ Maximum number of speed sensors that can be connected on the same time: 7;
- ✓ Number of analogue (pressure) channel: 1;
- ✓ The system can be controlled from a remote location via proprietary pad or USB control;
- ✓ Very low system requirements and extended operating system compatibility allow the use also with previous generation personal computer.

Complete & quick & easy to use

- Ready to use at the power on, no operation required to work.
- All commands are available on the main window, and can be accessed via mouse or keyboard shortcuts.
- System setup protected, in the case of wrong operation is possible to reset to default state simply shutting down the XB_SSW.
- Broad range of measuring functions: time, velocity, momentum, maximum pressure, integral, time measured on pressure curves (priming delay, pressure rise time, etc) muzzle pressure (not available in LITE version) combined in a maximum of 8 results per shot.
- Statistics functions: mean, standard deviation rate, Pk2 (maximum statistical pressure in accordance with C.I.P. rules)
- The first 23 round and the statistics are updated immediately after the shot on the main window, other shots (maximum 100) can be displayed using the scroll function.
- Results can be erased at the end of the test, shots can be added to a saved results.
- Is possible to save a practically unlimited number of test results and loading data. The test results are automatically compressed before saving to save disk space.
- The software can use metric or imperial measuring units independently for velocity and pressure channel. Barriers distance, piezo data etc are fully configurable. by the user
- All operation supported by the software apply to the real time acquired data and to the stored information in the same way.
- autotest of the data logger
- Complete manual, availability of complete on site user training, lifetime free remote support, on line help, automatic.

Main new feature introduced on version 2.0

- + Management of an unlimited number of configuration files;
- + Esc key and mouse wheel support on pressure curves display as well of on flight pressure limit change
- + Results columns header can be modified directly from the main form
- + New built in hardware driver allow faster operation .
- + And many more...

Very easy to modify setup.

BARR	Level [mV]	Thres [0=H->L, 1=L->H]	Enable	
B1:	Fix	0	<input checked="" type="checkbox"/>	0.00
B2:	Fix or = Fo1	0	<input checked="" type="checkbox"/>	0.00
B3:	Fix or = Fo2	0	<input type="checkbox"/>	0.00
B4:	500	0	<input checked="" type="checkbox"/>	0.00
B5:	500	0	<input type="checkbox"/>	0.00
Fo1:	500	0	<input checked="" type="checkbox"/>	0.00
Fo2:	500	0	<input type="checkbox"/>	0.00
Tr_Int:	0	Mode[%post trig 0=ante]	<input type="checkbox"/>	0

Charge Ampl.: 0.3457 mV/pC - Piezo Transd. Sens.: 2.450 pC/bar
block mask 54

Save

The set up functions that are rarely used are placed in a separated module in a clear and intuitive form.

FORM Characteristics

The 'F02_caract' form is a data entry interface for test characteristics. It contains the following fields:

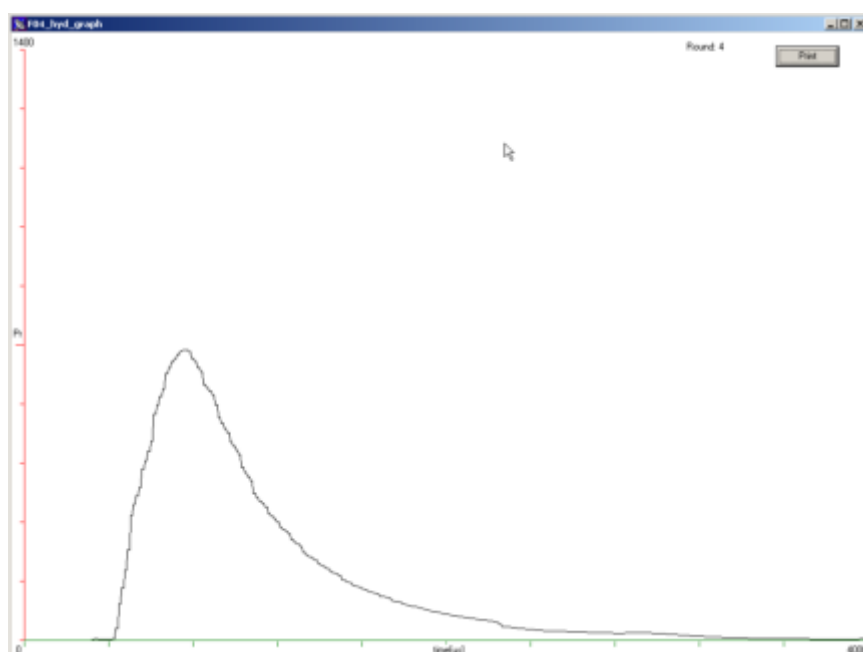
- TEST: []
- DATE: 1/1/2009
- TIME: 11:9
- SHOT SHELL: []
- GA: []
- No: []
- LOT: []
- BRAND: []
- CASE: []
- TYPE: []
- MATER: []
- HEIGHT: []
- COLOUR: []
- PRIMER: []
- BATCH N: []
- POWDER: []
- WEIGHT(g): []
- +/-: []
- BATCH: []
- WAD1: []
- SHOT: []
- WEIGHT(g): []
- +/-: []
- DAM: []
- WAD2: []
- CRIMP: []
- CRIMP RES: []
- LENGTH(mm): []
- PCS LOT: []
- DATE: []
- TIME: []
- TEMP: []
- R.H.: []
- LINE: []
- OPERATOR: []
- FUNCTIONALITY: []
- TEMP ext: []
- RH ext: []
- PRESSURE: []
- TEMP ext: []
- RH ext: []
- CONDITIONING: []
- OPERATOR: []
- MAN. BARREL: []
- TRANS: []
- FILE: []
- NOTE: []

Buttons: Clear, OK

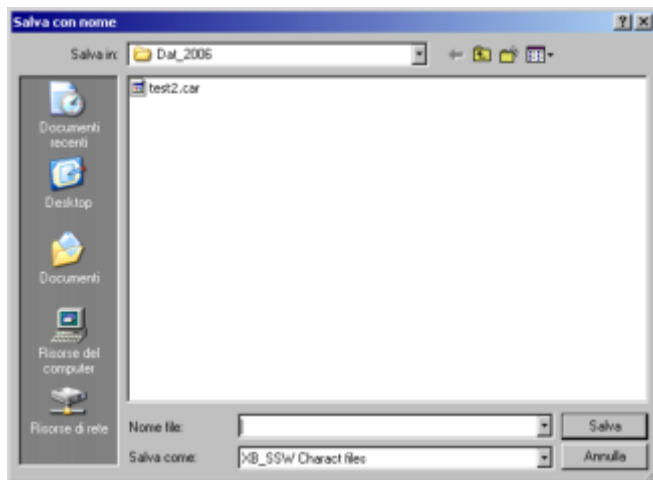
By selecting the key [Characteristics] on the main form the user can access to the loading data form of the software that enable to set the information that the user's want to print on the test certificate and to store with the test results. Specifications of the loading batch can be stored (and retrieved) separately from the test results using the standard Windows® procedure to use the same input for various tests run.

Pressure curve display form (not available in the LITE version)

By pressing the [g] key the pressure curve of the last shotshell fired can be displayed and eventually printed (with the test reference added automatically). Double click on the main form on the row of the round selected do the same result. When curves are displayed the same can be easily selected using the scroll wheel of the mouse. Pressure scale can be changed on the fly.



Files Operation



The standard WINDOWS® frames are used (where applicable) for all the operation inside the software. (load, Save, Printer Setup, etc) .

=====

The measures can be performed only if the data logger hardware (and peripherals) are compatible with the planned test.

Computer minimum requirement : computer and peripherals compatible with WINDOWS® 98SE or XP, 64 MBytes RAM (for XP 256MB), CD , Monitor with resolution 1024 x 768 or higher.

Data Logger compatibility: BW04

Data subject to change without notice

Doc. No: 2148

Titolo: XBSSW 2.0 Software presentation

Data : January 2009

WINDOWS® is a registered trade mark of Microsoft Corporation.

Numeri di riferimento / Part Number (p.n.):

© 2007- 2009 **Paini Sistemi Italcaccia srl**

PAINI SISTEMI ITALCACCIA s.r.l.

Divisione Elettronica & Sistemi

Via Rossini 8 - 43011 Busseto (PR) ITALY

tel. +39 0524 332150 e-mail: info1@paini-esd.it

URL : www.paini-esd.it



*quam ludus durus fuit
duri ludere incipiunt*

PainiSistemi

Electronics & Systems division